

1100 & 1200 SERIES

ELECTRICAL:

Amps - see table
 600 volts AC/DC
 Short circuit current rating (SCCR) of 10K

STANDARDS:

UL 1059 recognized file no. XCFR2.E62806
 CSA certified file no. LR19766 (CSA C22-2 No. 158)
 CE (Component IEC 60947-7-1)
 RoHS compliant (All)

WEBSITE RESOURCES:

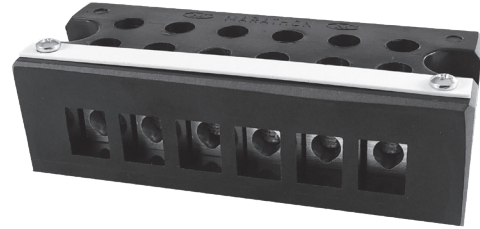
Detailed product data sheets

- Material information
- Termination & mounting specifications
- Multiple wire rating specifications

Dimensional drawings & 3D CAD files
 Accessories available



1104



1206

AMPS	SERIES	CATALOG #	POLES (x)	WIRE RANGE	POLE TO POLE	SCREWS
65	1100	1102	2	#6 - 18 AWG CU #6 - 12 AWG AL	.44	Brass, Tin Plated
		1104	4			
		1106	6			
		1107	7			
		1108	8			
		1112	12			
70	1200	1202	2	#4 - 18 AWG CU	.50	Steel, Nickel Plated
		1204	4			
		1206	6			

TERMINAL BLOCKS